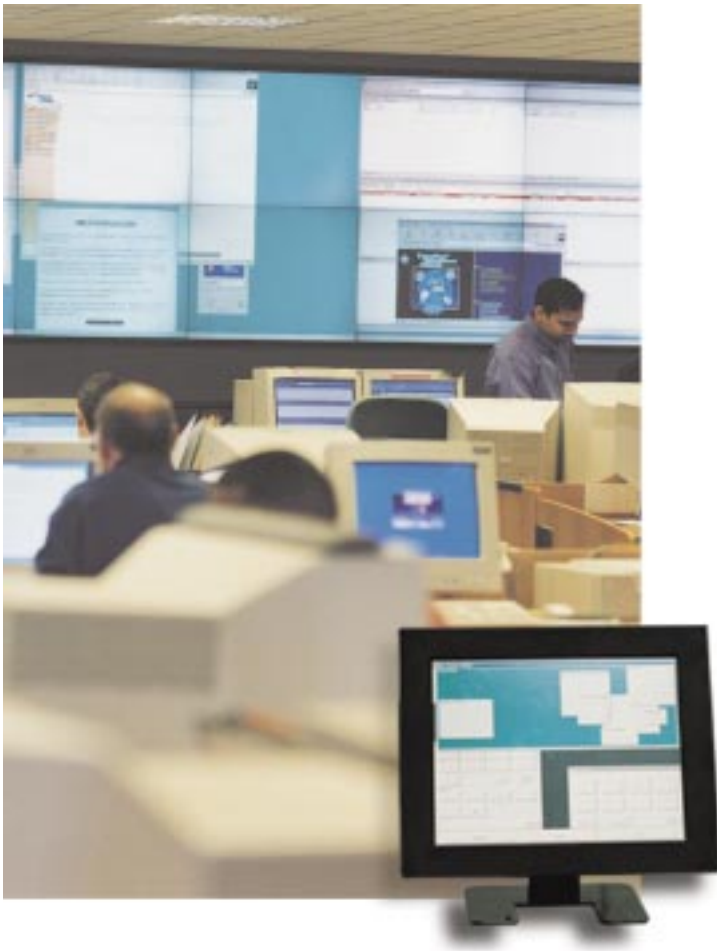


# HARP KAMServer

CONTROL THE DISPLAY WALL FROM A SINGLE WORKSTATION



**This proprietary product enables operators to control an entire display wall using the keyboard and mouse function of a remote, networked desktop PC.**

The mission of Harp Visual Communications is to put operators clearly in control of multi-screen and control room environments.

KAMServer is an original Harp solution that allows operators to use the Keyboard And Mouse function of a single workstation to control an entire display wall. Each operator can 'warp' the keyboard and mouse operation of a local workstation to the display wall and back using one simple function key - so the display wall becomes an extension of the operator's own workstation, allowing applications to be controlled both local and globally.

The KAMServer is made up of two parts. The server element (KAMServe) resides on the Harp NTDW, a proprietary drive electronics module which is attached to the network and allows up to 16 connected screens to be seen 'as one'.



**HARP**

VISUAL COMMUNICATION SOLUTIONS

# P R O D U C T I N F O R M A T I O N

The client element, RemKAM, sits on one or more of the networked NT workstations.

When an operator runs RemKAM, key and mouse data is sent across the network to KAMServe which then uses it to move the cursor around the display wall as appropriate.

RemKAM has to be installed on the workstation of each operator needing remote control of an application, with optional PIN access available to maintain system security at all times.

Global control of the display wall is possible through the highest 'Supervisor' setting, while supervisors themselves can assign Priority Level Configuration to ensure other operators' control remains within set boundaries - so Operator A cannot unwittingly make changes affecting the distinct responsibility of Operator B.

- Remote keyboard and mouse operation
  - Desktop control of the display wall
  - Multiple user access
  - Priority level configuration
  - Optional security PIN access
- Specifications subject to change without notice or obligation.  
All other brands and product names are trademarks or registered trademarks of their respective companies. E. & O. E.



**HARP**

VISUAL COMMUNICATION SOLUTIONS

**Harp Visual Communications Limited**  
**Unit 7 Swanwick Business Centre**  
**Bridge Road,**  
**Lower Swanwick**  
**Southampton**  
**SO31 7GB**  
**Tel. 01489 580 011**  
**Fax. 01489 580 022**  
**[www.harvisual.co.uk](http://www.harvisual.co.uk)**