

# Data Display Cubes

VS-50XL20U | VS-67XL20U | VS-50XLW20U

XGA Rear Access Data Display Cubes

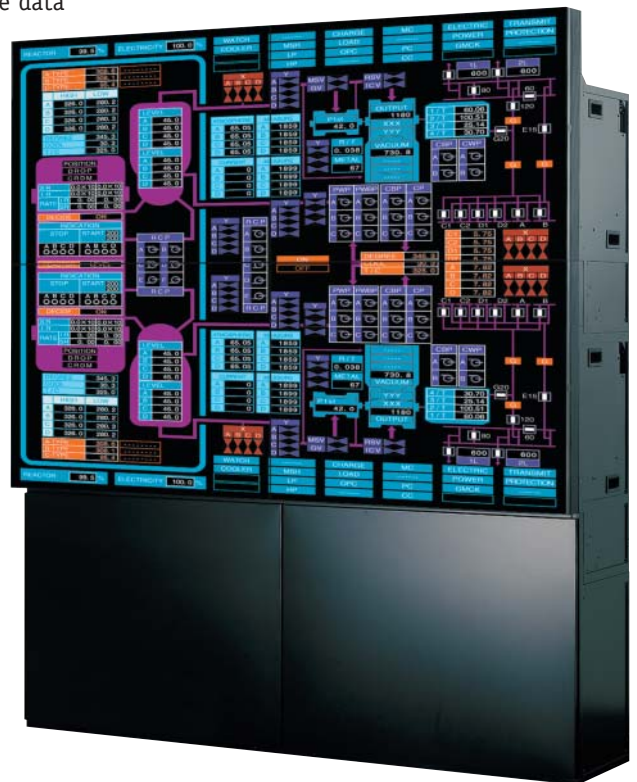


Mitsubishi's line of 50- and 67-inch high-resolution MegaView Wall rear-access data displays include a proprietary suite of advanced features and functions that result in a display image that is sharper, brighter and more reliable than ever before.



When non-stop monitoring is critical, Mitsubishi's XL MegaView Wall rear-access models are the preferred choice of system integrators. The entire line is equipped with Mitsubishi's first Smart Lamp™ and Smart Colorwheel™ features. Each display wall cube stores its own color characteristics. When a lamp or colorwheel is replaced, this function is then activated, retrieves the data from the display wall cube, and performs a re-calibration of the color adjustments, bringing all of the cubes into perfect color balance. In addition, the VS-50XLW20U is equipped with an exclusive lamp changer device. The cube is able to sense a complete lamp failure or degeneration in brightness of a percentage that the user chooses and automatically switches to a new lamp.

- True XGA, high resolution imagery
- Compact, fully modular and stackable
- Digital Color Space Control (CSC) enables optimal color blending between screens in tiled applications
- Exclusive, award-winning ColorView Natural Color Matrix which produces superb color reproduction and superior picture quality
- Smart Lamp and Smart Colorwheel
- Exclusive lamp changer (VS-50XLW20U)
- Two modes of brightness for optimum viewing
- Comprehensive warranty and toll-free technical support



*Mitsubishi Quality With Proven Reliability*



# Data DisplayCubes

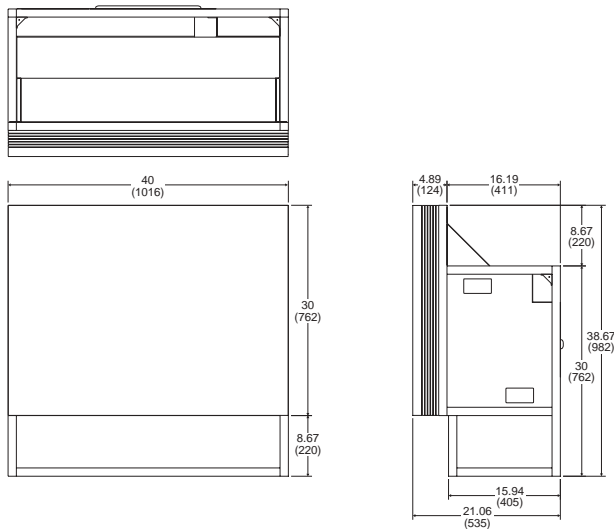
## VS-50XL20U | VS-67XL20U | VS-50XLW20U

### XGA Rear Access Data Display Cubes

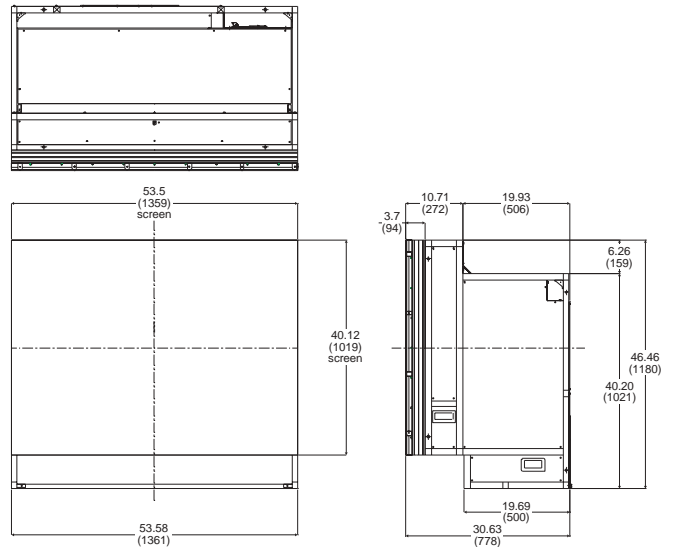


SPECIFICATIONS	Model VS-50XL20U Standard Cube	Model VS-50XLW20U Lamp Changer Cube	Model VS-67XL20U Standard Cube
Display Technology	DLP (0.7", 12° DMD single chip)		
Screen Size	50" diagonal viewable (1270 mm)	50" diagonal viewable (1270 mm)	67" diagonal viewable (1701 mm)
Resolution	1024 x 768 pixels (XGA)		
Signal Input Terminal	Analog RGB: 5BNC (RGBHV) x 1; Digital RGB: DVI-D x 1		
RGB Input Scanning Frequency	Horizontal: 31.5 - 64.0 kHz; Vertical: 49 - 61 Hz		
Pixel Clock Rate	25 - 115 MHz		
Analog RGB Input Signal	5 BNC (RGBHV) x1; Video: 0.7Vp-p positive/75Ω; Synchronous: TTL level (positive/negative), High Level: 2.5-5.0V; Low Level: 0-0.5V; Sync On Green: Video: 0.7Vp-p positive; Synchronous: 0.3Vp-p negative		
Digital RGB Input Signal	TMDS (DVI-D x1)		
Control Signal Input	RS-232C: D-Sub 9 pins; D-Sub 9 pins x 2 (input, output) Mitsubishi original control link; Wired Remote: F3.5 Jack; IR Receiver		
Lamp	Ultra-high pressure mercury lamp 100W/120W (VS-50XLW20U - 2 lamps)		
Brightness	Bright: 1000 cd/m <sup>2</sup> (typical); 292 ft.-L (typical); Normal: 800 cd/m <sup>2</sup> (typical); 234 ft.-L (typical)	Bright: 1000 cd/m <sup>2</sup> (typical); 292 ft.-L (typical); Normal: 800 cd/m <sup>2</sup> (typical); 234 ft.-L (typical)	Bright: 500 cd/m <sup>2</sup> (typical); 146 ft.-L (typical); Normal: 400 cd/m <sup>2</sup> (typical); 117 ft.-L (typical)
Light Output	Bright: 700 ANSI Lumens; Normal: 560 ANSI Lumens		
Contrast Ratio	1300:1 (typical)		
Viewing Angle	Horizontal: ± 60°; Vertical: ± 25° (typical)		
Mullion size	<1 mm (typ.)	<1 mm (typ.)	<2 mm (typ.)
Voltage Range	AC 100-240V ±10%, 50/60Hz ±1 Hz		
Power Consumption	195/195W		
Dimensions (W x H x D)	40 x 38.7 x 21.1" (1016 x 982 x 535 mm)	40 x 38.7 x 21.1" (1016 x 982 x 535 mm)	53.6 x 46.5 x 30.6" (1361 x 1180 x 778 mm)
Weight	130 lbs. (59 kg)	136.7 lbs. (62 kg)	201 lbs. (91 kg)
Temperature and Humidity	Condition at Operation: 50-95°F; (10-35°C) 20-80% non-condensing Condition at Storage: -4-122°F; (-20-50°C) 20-80% non-condensing		
Safety Approval	UL60950, CSA22.2 No.60950, EN60950, Approved by UL		
EMC	FCC part 15 Class A, Industry Canada Class A, EN55022 Class A, EN55024, EN61000-3-2, EN61000-3-3		

External Dimensions Unit: Inches (mm) Models VS-50XL20U and VS-50XLW20U



External Dimensions Unit: Inches (mm) Model VS-67XL20U



©2004 Mitsubishi Digital Electronics America, Inc. Standard features, options and specifications subject to change without notice. Digital Light Processing™ (DLP™) and Digital Micromirror Device™ (DMD™) are registered trademarks of Texas Instruments Corporation. All other trademarks or registered trademarks are the property of their respective holders.

Printed on 50% recycled paper including 20% post-consumer fibers.

#### Mitsubishi Digital Electronics America, Inc.

Presentation Products Division, 9351 Jeronimo Road, Irvine, CA 92618  
Toll Free: 888-307-0349 | www.mitsubishi-megaview.com

Technical Support: Toll Free: 888-307-0309 | Email: tsupport@mdea.com

#### Mitsubishi Electric Sales Canada Inc.

Information Technologies Group, Markham, Ontario  
Phone: 905-475-7728 | www.MitsubishiElectric.ca