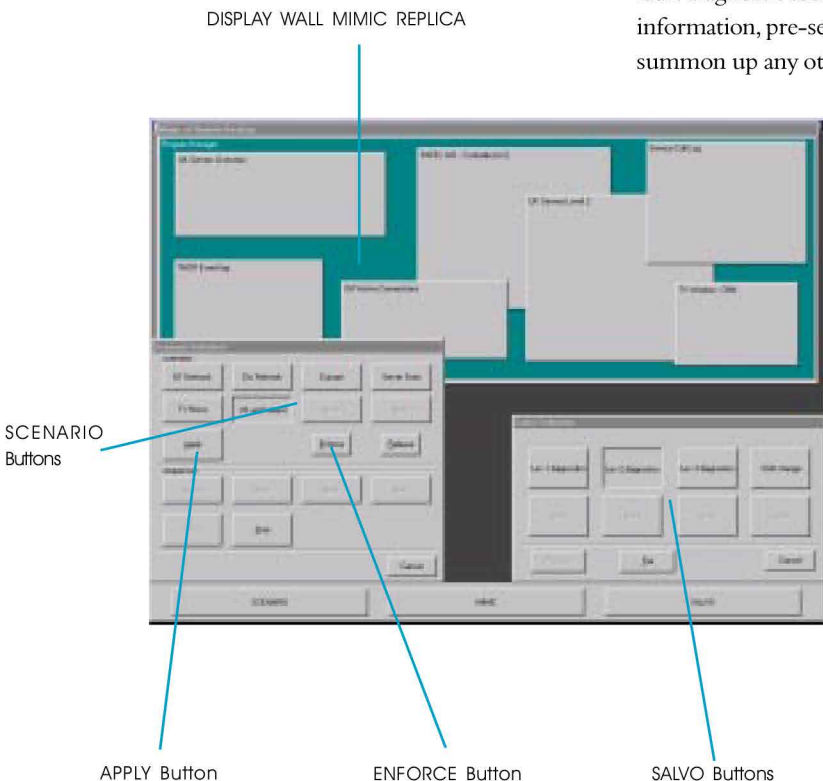


By pre-configuring Incident Scenarios, operators can invoke management information at the touch of a button, bring fault diagnostic tools on-line, display second level alarm information, pre-set 'drilled down' network pictures and summon up any other application that needs to be invoked from time to time.

As an application is brought on-line, macro scripts can be used to drill down through the application to pre-set areas of interest.

Scenarios can be used to tidy up a display after windows have been moved around, or simply enforced so their position cannot be moved around to start with. Strings of scenarios can be made to run as a sequence, allowing a greater amount of information to be viewed over a set time without cluttering the display wall.



Physical Specifications*	
Commandant 18"	18.1" LCD touch panel delivering 1280 x 1024 resolution
Commandant 15"	15" LCD touch panel delivering 1024 x 768 resolution

Software Tools	
Screen scenarios	<ul style="list-style-type: none"> • Pre-selected tiling • Window rubber banding • Instant change of Focus Window • Incident scenarios • Timed events
Application salvos	<ul style="list-style-type: none"> • Auto application launching • Alarmed events • All change events • Activation of on-line diagnostics • Presentation launching • Password protection • Peer Level Control

Specifications subject to change without notice or obligation. Pentium is a registered trademark of the Intel Corporation. Intel is a registered trademark of Intel Corporation. All other brands and product names are trademarks or registered trademarks of their respective companies. E.& O. E.



HARP

VISUAL COMMUNICATION SOLUTIONS

Harp Visual Communications Limited
Unit 7 Swanwick Business Centre
Bridge Road,
Lower Swanwick
Southampton
SO31 7GB

www.harpvisual.co.uk