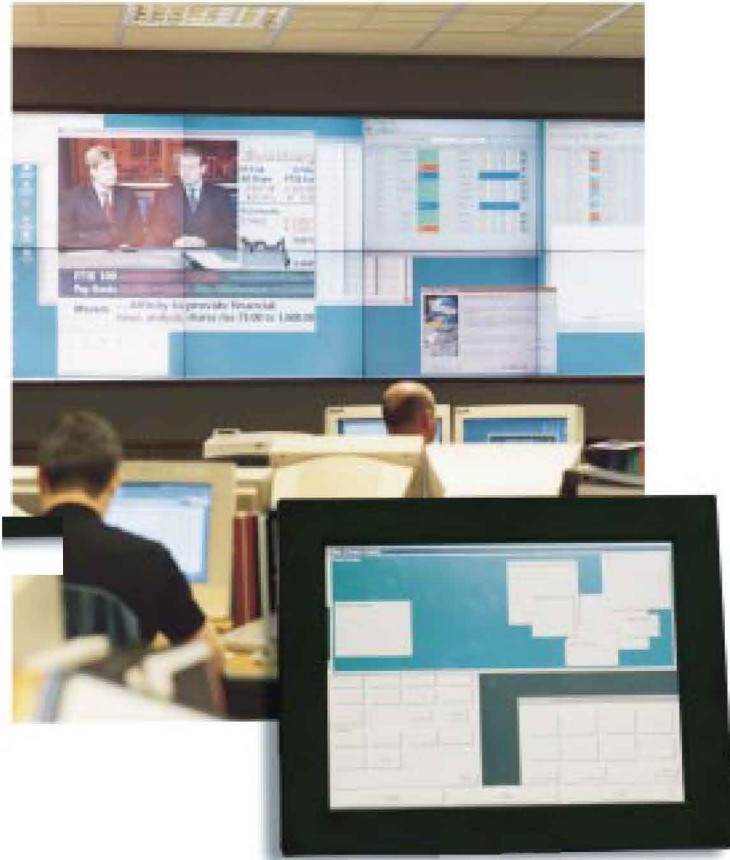


# HARP Commandant

COMPREHENSIVE REMOTE CONTROL FOR VIDEO WALLS

*flexibility*



**Controlling which applications are launched, when, and how they are positioned on the display wall gives operators easier, faster access to required information.**

The Harp Commandant is a powerful touch-panel interface to a display wall, which allows a user to control the applications on display in three important ways:

- By selecting and moving application windows
- By imposing scenarios - which give a pre-configured position and window size to multiple applications
- By activating salvos - which launch applications either at the touch of a button or when activated by an alarm or timed event

This combination of possibilities truly unlocks the potential of the display wall.

*understand*



**H A R P**

VISUAL COMMUNICATION SOLUTIONS

*solutions*