

# HARP CommandaNT

COMPREHENSIVE REMOTE CONTROL FOR DISPLAY WALLS

*flexibility*



**Controlling which applications are launched, when, and how they are positioned on the display wall gives operators easier, faster access to required information.**

The Harp CommandaNT is a powerful touch-panel interface to a display wall, which allows a user to control the applications on display in three important ways:

- By selecting and moving application windows
- By imposing scenarios - which give a pre-configured position and window size to multiple applications
- By activating salvos - which launch applications either at the touch of a button or when activated by an alarm or timed event

This combination of possibilities truly unlocks the potential of the display wall.

*understanding*



**HARP**

VISUAL COMMUNICATION SOLUTIONS

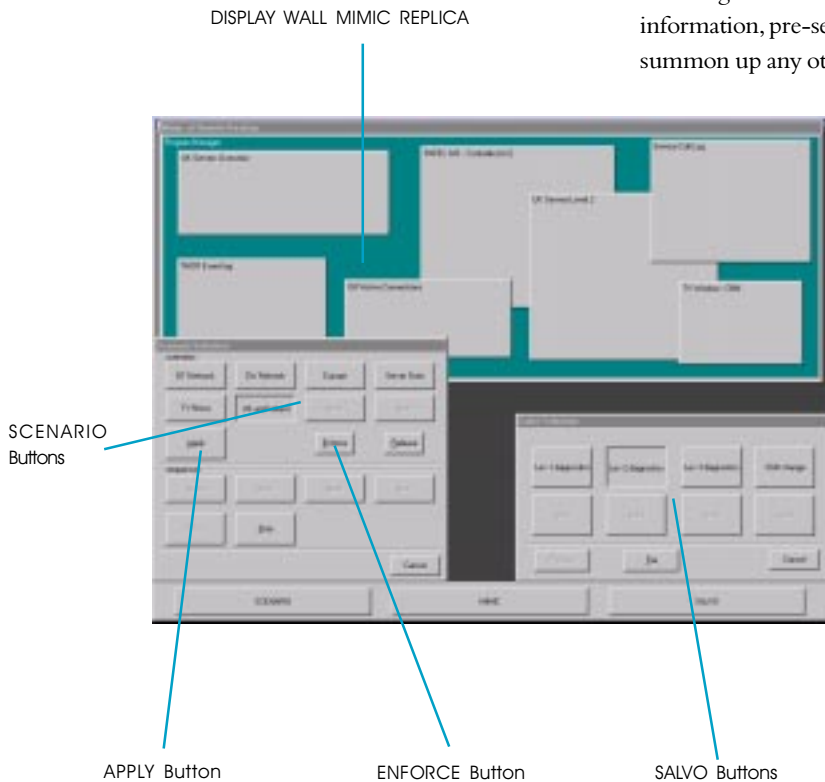
*solutions*

# P R O D U C T I N F O R M A T I O N

By pre-configuring Incident Scenarios, operators can invoke management information at the touch of a button, bring fault diagnostic tools on-line, display second level alarm information, pre-set 'drilled down' network pictures and summon up any other application that needs to be invoked from time to time.

As an application is brought on-line, macro scripts can be used to drill down through the application to pre-set areas of interest.

Scenarios can be used to tidy up a display after windows have been moved around, or simply enforced so their position cannot be moved around to start with. Strings of scenarios can be made to run as a sequence, allowing a greater amount of information to be viewed over a set time without cluttering the display wall.



Physical Specifications*	
CommandaNT 18"	18.1" LCD touch panel delivering 1280 x 1024 resolution
CommandaNT 15"	15" LCD touch panel delivering 1024 x 768 resolution

Software Tools	
Screen scenarios	<ul style="list-style-type: none"> <li>• Pre-selected tiling</li> <li>• Window rubber banding</li> <li>• Instant change of Focus Window</li> <li>• Incident scenarios</li> <li>• Timed events</li> </ul>
Application salvos	<ul style="list-style-type: none"> <li>• Auto application launching</li> <li>• Alarmed events</li> <li>• All change events</li> <li>• Activation of on-line diagnostics</li> <li>• Presentation launching</li> <li>• Password protection</li> <li>• Peer Level Control</li> </ul>

Specifications subject to change without notice or obligation. Pentium is a registered trademark of the Intel Corporation. Intel is a registered trademark of Intel Corporation. All other brands and product names are trademarks or registered trademarks of their respective companies. E.& O. E.



## HARP

VISUAL COMMUNICATION SOLUTIONS

**Harp Visual Communications Limited**  
**Unit 7 Swanwick Business Centre**  
**Bridge Road,**  
**Lower Swanwick**  
**Southampton**  
**SO31 7GB**  
**Tel. 01489 580 011**  
**Fax. 01489 580 022**  
[www.harpvisual.co.uk](http://www.harpvisual.co.uk)